

# PYNEWOODS ESTATE

> WHERE PALM DESERT MEETS THE NORTHWEST <



NORTH IDAHO

# 5468 W. CARNELIAN DRIVE

Main House | 7766 Sq Ft | 3 Bed | 4+ Bath | 4 Car Garage  
Guest House | 2206 Sq Ft | 1 Bed + Bunk Room | 3.5 Baths  
Garden House | 472 Sq Ft | 1 Bath | Sauna  
Private Boat Slip | Community Waterfront | 7.15 Acres





Located in the premier Estates portion of the Black Rock Development, this contemporary masterpiece is perfectly positioned to maximize the incredible setting and mesmerizing Coeur d'Alene Lake views.

A mountain-modern marvel boasting 10,000+ square feet of single-level living space, with ultra-high-end designer furnishings and beautifully balanced interior/exterior finishes such as Telluride stone, zinc, stainless steel, teak, white oak and more.

Designed for entertaining, the expansive great room features a full bar, multiple seating areas and retractable glass doors that fully engage the covered patio with dual sectionals overlooking the wading pool, custom stainless steel fire-pits and breathtaking lake views beyond.

Sleek chef's kitchen equipped with professional-grade Gaggenau appliances, lacquered white cabinetry with full stainless steel interiors and ample prep and storage space. The adjacent lake view dining room seats 16 comfortably with glass doors that fully retract to incorporate the outdoor dining table.

The private master wing resides at the north end of the home and includes his & her offices, spa-like baths, large walk-in closets and a fitness studio. At the south end of the home is the guest wing with two bedroom suites and a private lounge area. A breezeway connects the guest wing to a semi-detached 2,200 square foot guest house with a full kitchen, great room, game room, one bedroom suite plus a bunkroom that sleeps 8 – ideally suited for extended-stay family and friends.

A fully-enclosed garden area with fruit trees and raised garden beds features a 472 square foot garden house with potting tables and the same luxury finishes as the main home, including a full bath & sauna. It's an absolute gardener's delight.

The home is situated on 7 acres of peaceful, park-like grounds with reflecting pools, native plants, cascading garden tiers and a private pickleball court. Access to The Estates private waterfront beach club with cabana and a private boat slip are included.

Homes like this don't become available very often. Truly a world-class estate in a world-class location.

Pynewoods Estate is ONE of ONE.

Shown by special appointment only.

**3D Matterport Tour:**

<https://my.matterport.com/show/?m=N8xThjs4sAs>

**Photo Slideshow:**

<https://www.tourfactory.com/2892054>

[www.5468WestCarnelianDrive.com](http://www.5468WestCarnelianDrive.com)



- ^ Expansive glass sliders retract to fully engage the outdoor living area and those breathtaking CDA Lake views.
- < The lake views and architectural details take center stage with the tv tucked behind the Caesarstone fireplace, accessed by the touch of a button. Spacious and inviting, the expansive great room offers multiple sitting areas and a full bar perfect for entertaining. The Holly Hunt red rug and Augustin sectional, Portafino swivel chairs, Telluride stone and floating teak ceiling compliment one another perfectly.
- ∨ The teak covered patio with sitting area is surrounded by the infinity edge wading pool with custom gas firepits.
- > The sleek chef's kitchen with privacy doors can be closed while entertaining. Top-of-the-line Gaggenau appliances, including a 5 burner cooktop, steam oven, microwave, warming drawer, espresso maker, and oversized refrigerator are ideal for your chef or everyday use. Lacquer finished white cabinets with stainless steel interiors and Blum closures.
- > The french doors lead you to the private grilling deck. Storage galore with the hidden closets behind the doors and a full wall of pass-through cabinets to the dining room serving bar.
- > Elegant dining for 16 with custom-made pearlized leather dining chairs, two Zebrawood dining tables adorned with custom pendants by Ingo Maurer and access to the outdoor dining area and expansive lake views beyond.





^ Master suite with gas fireplace framed by the floor to ceiling windows and CDA Lake views. Complete with a custom canopy bed by Michael Berman Lido, Holland & Sherry embroidered chair set, teak ceiling, round mirror with leather trim, automated windows and treatments by Carolyn Ray.

> The private master wing holds the bedroom, his and hers luxurious spa-like bathrooms. His includes an oversized walk-in shower, tv in the mirror & patio access and hers contains a jetted Kohler tub, makeup vanity, Anne Sacks horn inspired tile floors and vinyl wallcovering meant to look like horse hair, met in the middle by a massive closet with Kal Wal skylights, Chilewich floors, built-in custom cabinets, laundry area, access to the golf cart garage and personal fitness room.

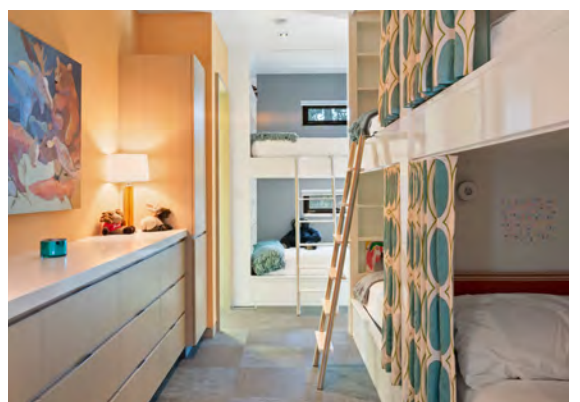




^ Private luxury guest wing with rustic beam accents, chandelier, automated shades, Telluride stone fireplace, mother of pearl Larson wallpaper and B&B sectional.

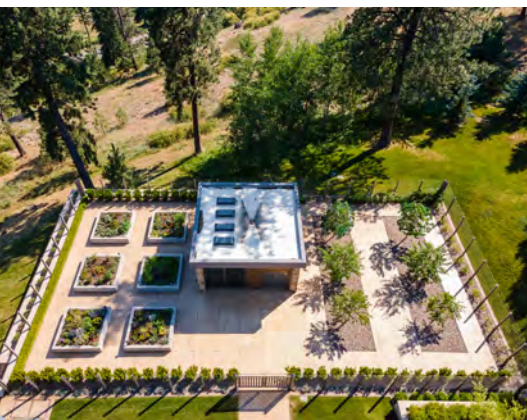
∨ Two bedroom suites with patio access through oversized french doors, Holly Hunt beds with Sutherland Rosenary alpaca headboards and luxurious ensuites complete with Walker Zanger tile, large showers with linear back drains, soaking tub and water closet with frosted glass surround.





- ^ The 2206 sq ft guest house is accessed via a covered breezeway and offers the same luxury finishes, including the honed Caesarstone gas fireplace, teak ceilings and Telluride stone. There's a private patio with gas fireplace and gorgeous views through the massive sliding doors.
- > Dining area and full kitchen with bar top for additional seating.
- > Master suite with beam accents and access to the patio. Full ensuite with floating double vanity, oversized soaking tub tucked between the frosted glass shower and water closet enclosures.
- > Spacious laundry area and two separate bathrooms - one catered to the ladies with a 3-seat makeup vanity and the other to the boys with it's more masculine finishes. Bunk room sleeps eight, each bed complete with privacy curtains, lighting and built-in storage closets. The kids may never leave the game room with shuffleboard, TV/gaming console, Fatboy beanbags and rolling garage door.



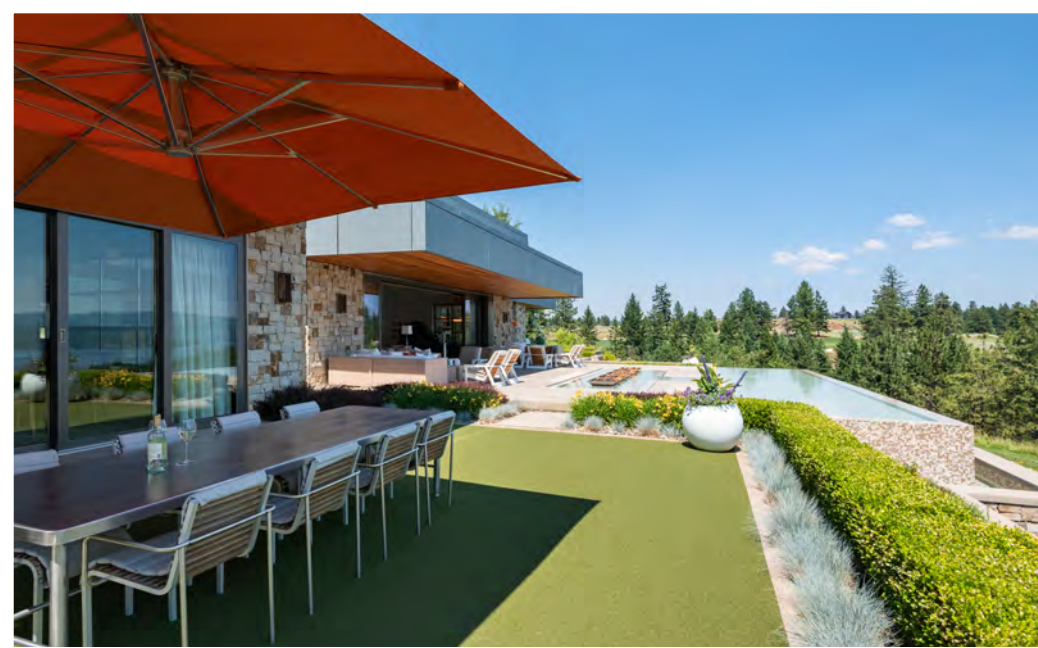


△ Perfectly manicured park-like landscape surrounds the estate. The fully-fenced vegetable garden hosts 6 raised beds, pear and apple trees, blueberry and raspberry bushes, and a gorgeous 472 sq ft garden house with the same luxury finishes found throughout.

△ The oversized sliding doors open to a planting area with stainless steel potting tables, stainless steel wall panels, and windows with automated shades. Complete with a sauna and full bathroom.

▽ Full pickleball court surrounded by low-maintenance astro turf, cooler well, mini-fridge and gas firepit with amazing lake views.







### WATERFRONT RESTAURANTS

- 1 Cedars Floating Restaurant 208.664.2922
- 2 Dockside @ CDA Resort 208.666.5799
- 2 Beverly's @ CDA Resort 208.765.4000
- 3 Tony's on the Lake 208.667.9885
- 4 Le Peep 208.664.0404
- 5 Shooters Bar & Grill 208.667.6106

### 6 DOWNTOWN CDA RESTAURANTS

- Seasons of CDA 208.664.8008
- Sweet Lous Restaurant 208.667.1170
- Collective Kitchen 208.930.4762
- Crafted Tap House + Kitchen 208.292.4813
- Fire Pizza 208.676.1743
- 315 Cuisine 208.667.9660
- Tito's Italian Grill 208.667.2782
- Angelo's Ristorante 208.765.2850
- Moon Time 208.667.2331
- Syringa Sushi 208.664.2718
- Honey Eatery & Social Club 208.930.1514
- Abi's Ice Cream 112 N. 4th St.
- Honeypeeps Sweet Shop 210 E. Sherman Ave.
- Gelato by the Lake 217 E. Sherman Ave.

### 4 RIVERSTONE

Shops - Dining - Movie Theater  
[www.riverstonecda.net](http://www.riverstonecda.net)

### GOLF COURSES

- 7 The Golf Club at Black Rock 208.676.8999 (Private Club)
- 8 Gozzer Ranch Golf & Lake Club 208.665.6600 (Private Club)
- 9 The Club at Rock Creek 208.664.8088 (Private Club)
- 10 Coeur d'Alene Resort Golf Course 208.667.4653
- 11 Circling Raven Golf Club 800.523.2464

### MARINAS

- 5 Black Rock Marina 208.664.6931
- 12 Sun-Up Bay Marina 208.664.6810
- 13 Silver Beach Marina 208.664.8274
- 2 Boardwalk Marina 208.415.5600

### NEARBY ACTIVITIES

Hiking [www.alltrails.com/us/idaho/coeur-d-alene--2](http://www.alltrails.com/us/idaho/coeur-d-alene--2)  
 Timberline Adventures Zipline 208.820.2080  
 Silverwood Theme Park 208.683.3400  
 CDA Adventures  
 Horseback Riding-Guided Fishing-Rafting  
<https://www.cdaadventures.com>



The Estates is the perfect blend of community and convenience with just the right amount of privacy and elbow room. Access to the 20 acre park trail system that connects the hilltop homesites to the lake front below, the private waterfront beach club cabana with grass to the water's edge, and private boat slip are included.



NORTH IDAHO

**GREG ROWLEY**  
LUXURY PROPERTY SPECIALIST

208.659.6527  
growley@cbidaho.com  
LuxuryHomesNorthIdaho.com



**MATT BAINE**  
LUXURY PROPERTY SPECIALIST

208.819.2928  
mbaine@cbidaho.com  
LuxuryHomesNorthIdaho.com



**COLDWELL BANKER**  
SCHNEIDMILLER  
REALTY